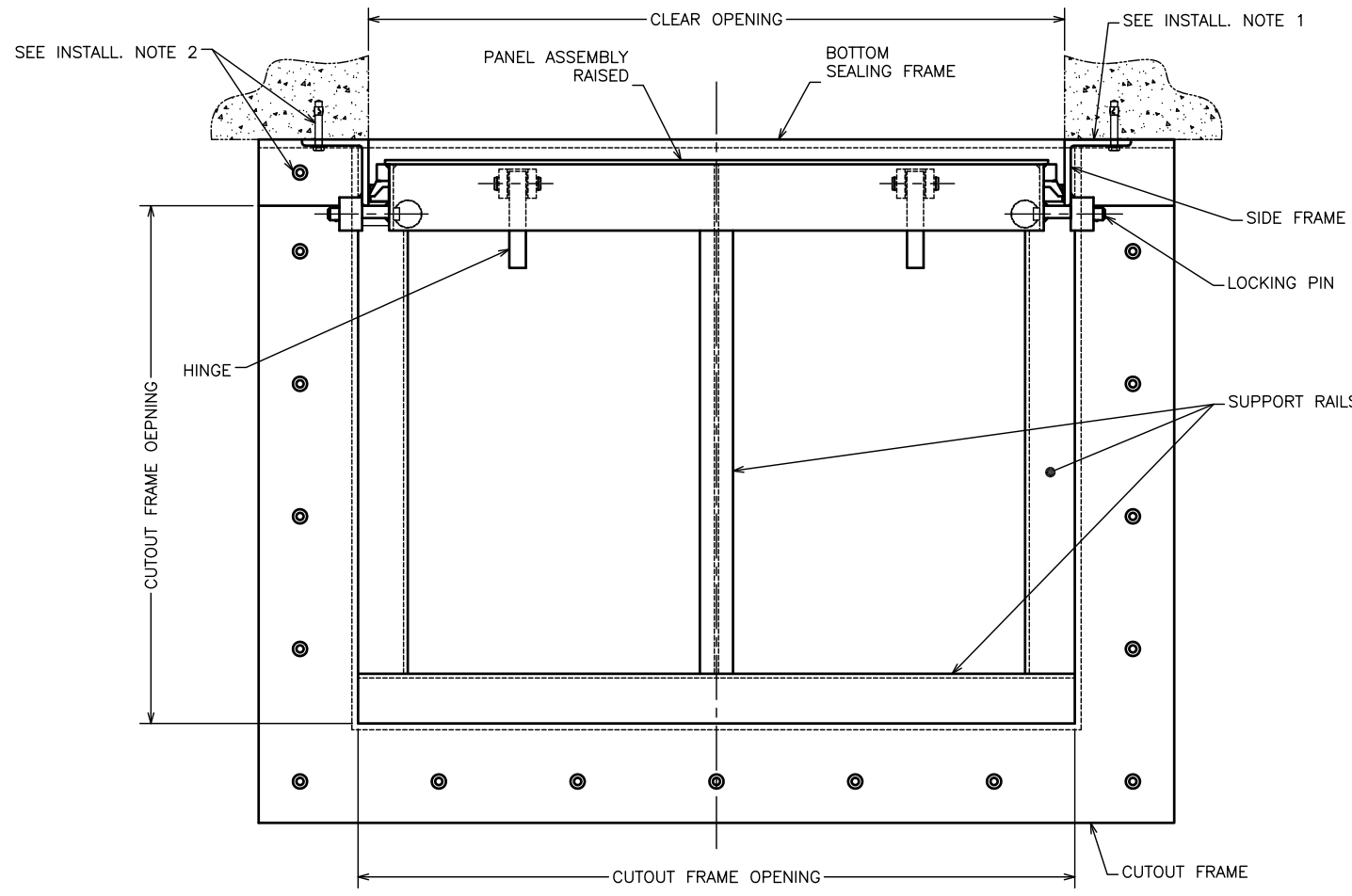
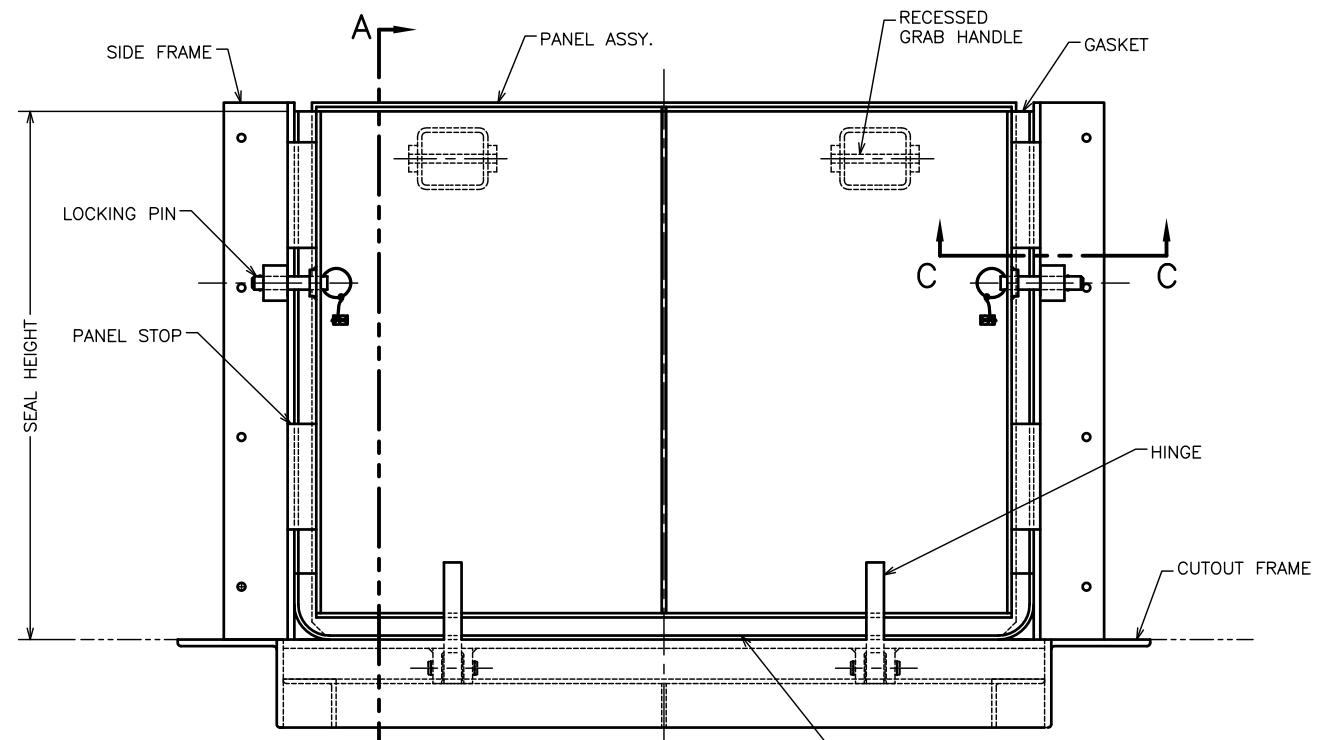


8 7 6 5 4 3 2 1



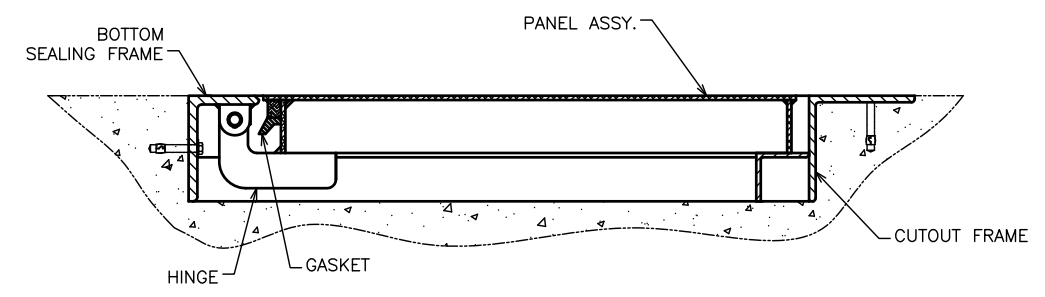
PLAN VIEW
PANEL ASSEMBLY RAISED



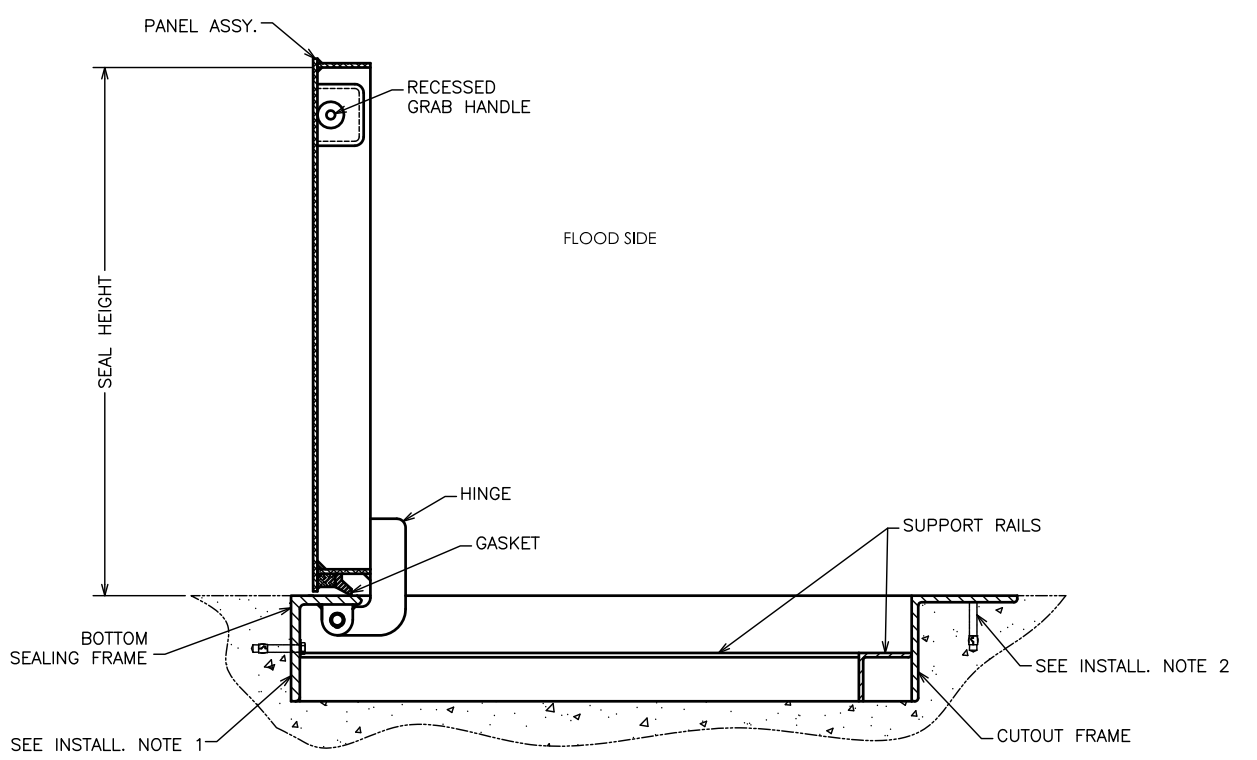
ELEVATION VIEW
PANEL ASSEMBLY RAISED, VIEWED FROM FLOOD SIDE

INSTALLATION NOTES:

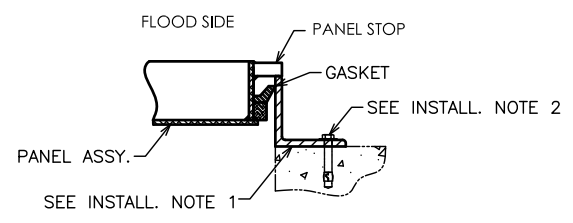
1. SILICONE SEALANT SHALL BE APPLIED ON SIDE AND BOTTOM SEALING FRAME SURFACES THAT WILL BE IN WITH CONTACT CONCRETE. SILICONE SEALANT TO BE SUPPLIED BY INSTALLER.
2. SIDE AND BOTTOM SEALING FRAMES TO BE MOUNTED TO WALL WITH HEX HEAD ANCHOR BOLTS, CUTOUT FRAME TO BE MOUNTED TO FLOOR WITH FLAT HEAD ANCHOR BOLTS. ANCHOR BOLTS ARE SUPPLIED BY INSTALLER.



SECTION B-B
SAME AS SECTION A-A BUT WITH PANEL LOWERED



SECTION A-A



SECTION C-C

NOTE: ALL DIMENSIONS ARE IN INCHES.
NOT ALL VIEWS ARE TO SCALE.

THIS DRAWING CONTAINS COMPANY PROPRIETARY AND CONFIDENTIAL INFORMATION AND IS NOT TO BE COPIED, DISCLOSED TO OTHERS OR USED IN ANY MANNER WITHOUT PRIOR PERMISSION OF WALZ & KRENZER, INC.

WK WALZ & KRENZER, INC.
91 WILLENBROCK RD., UNIT B-4 OXFORD, CT. 06478
WEB SITE: www.wkdoors.com

MANUAL FLIP UP FLOOD GATE (MODEL FG-BH)

8 7 6 5 4 3 2 1