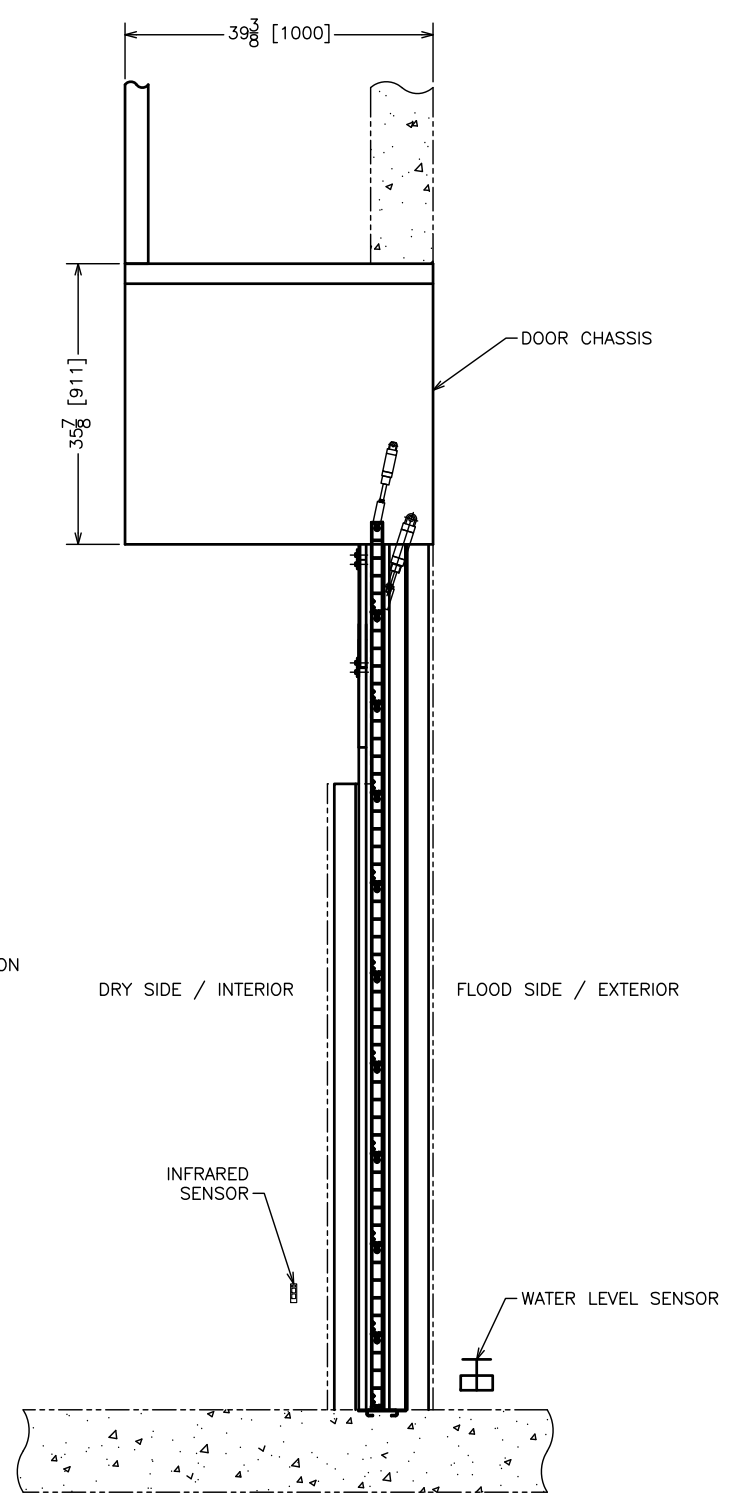
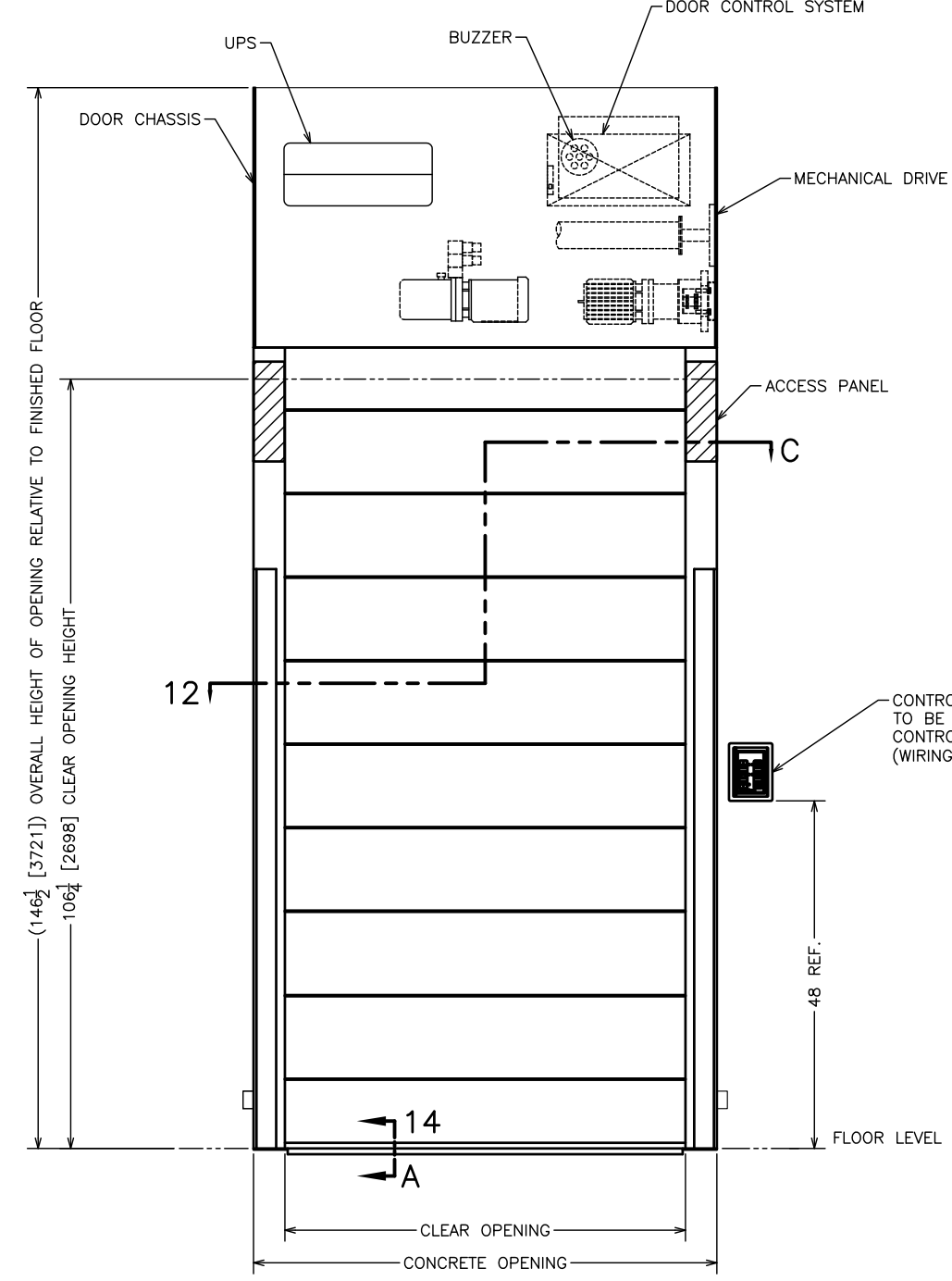
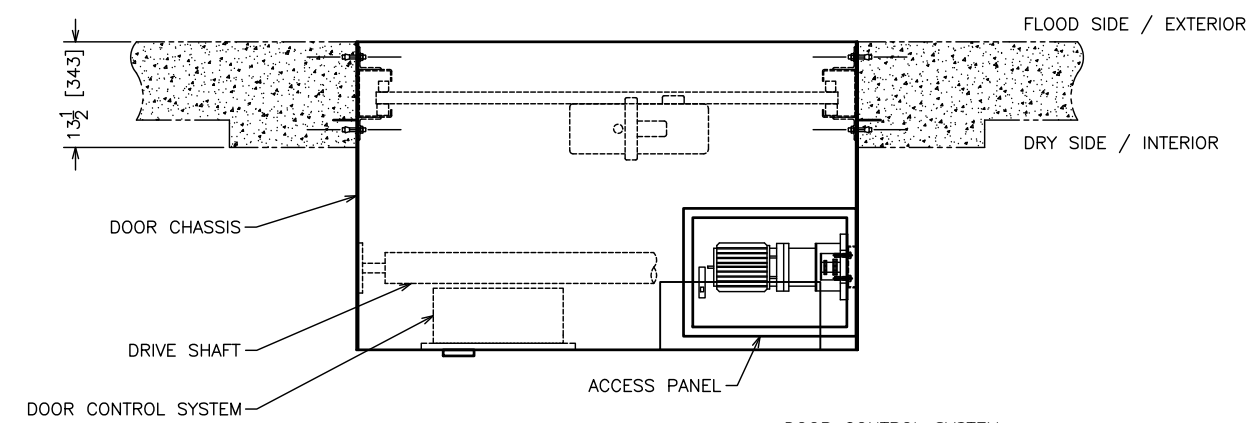


REVISION HISTORY				
REV.	DESCRIPTION	DATE	DRAWN	APPROVED



OPERATION NOTES:

1. MECHANICAL DRIVE SYSTEM OPENS AND CLOSES DOOR; HYDRAULIC SYSTEM COMPRESSES GASKET TO SEAL DOOR.
2. BUZZER PROVIDES AUDIBLE ALERT DURING DOOR OPERATION.
3. INFRARED SENSOR STOPS DOOR OPERATION IF BEAM IS BROKEN.
4. WATER LEVEL SENSOR AUTOMATICALLY CLOSES AND SEALS DOOR WHEN FLOOD WATERS REACH SENSOR.
5. UNINTERRUPTIBLE POWER SUPPLY (UPS) PROVIDES SHORT-TERM INDEPENDENT POWER FOR DOOR OPERATION DURING POWER FAILURE.

INSTALLATION NOTES:

1. DOOR POWER REQUIREMENT: 5.1 KVA PER DOOR. SOURCE VOLTAGE OF 120 VAC IS REQUIRED.
2. (26) 5/8" AND (4) 1/2" HEX HEAD ANCHOR BOLTS TO BE FURNISHED BY OTHERS FOR INSTALLATION. WK RECOMMENDS POWER-BOLT #6934 FOR 1/2" ANCHOR BOLTS AND POWER-BOLT #6944 FOR 5/8" ANCHOR BOLTS.
3. DOOR IS DESIGNED TO RESIST HYDROSTATIC LOAD OF WATER ONLY TO MAX. FLOOD HEIGHT INDICATED ON DRAWING AS PER "DFE" SHOWN ON MP-CCD-024.
4. SEE MAINTENANCE MANUAL FOR INSTALLATION INSTRUCTIONS. FAILURE TO INSTALL PER MANUFACTURER'S INSTRUCTIONS MAY VOID WARRANTY.
5. INSTALLATION, ANCHOR BOLTS, SEALANT, AND WIRING BETWEEN COMPONENTS BY OTHERS.
6. MOUNTING SURFACES MUST BE FLAT, PLUMB, AND STURDY. INSTALLER IS RESPONSIBLE FOR VERIFYING THAT MOUNTING STRUCTURES ARE CAPABLE OF WITHSTANDING HYDROSTATIC LOAD GENERATED BY FLOOD WATER.
7. A CONTINUOUS LIBERAL COATING OF SILICONE SEALANT SHALL BE APPLIED BETWEEN FRAME AND ALL MOUNTING SURFACES.
8. DIMENSIONS SHOWN IN INCHES WITH MILLIMETERS IN BRACKETS.

NOTE: NOT ALL VIEWS TO SCALE.
ALL DIMENSIONS ARE IN INCHES.

THIS DRAWING CONTAINS COMPANY PROPRIETARY INFORMATION AND IS COPYRIGHTED BY WALZ & KRENZER (W&K). W&K ALLOWS USE OF THIS DRAWING IN SPECIFICATIONS AND PLANS ONLY IF W&K IS LISTED AS A QUALIFIED SUPPLIER.

WK WALZ & KRENZER, INC.
91 WILLENBROCK RD., UNIT B-4 DUNFORD, CT. 06478
WEB SITE: www.wkdoors.com

AUTONSEAL ROLLER CURTAIN DOOR (MODEL WT-R)